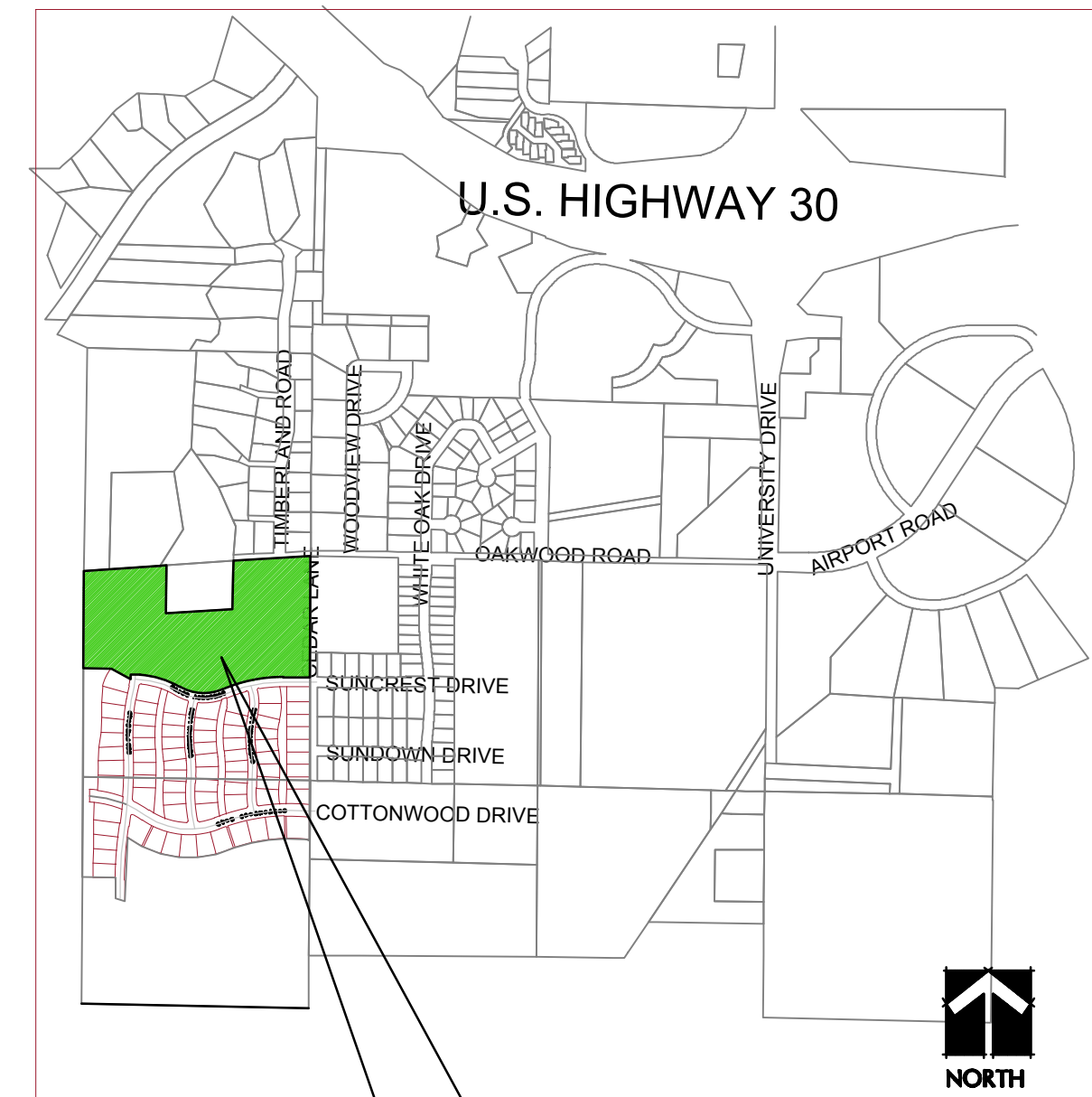


RINGGENBERG PARK SUBDIVISION

4th ADDITION

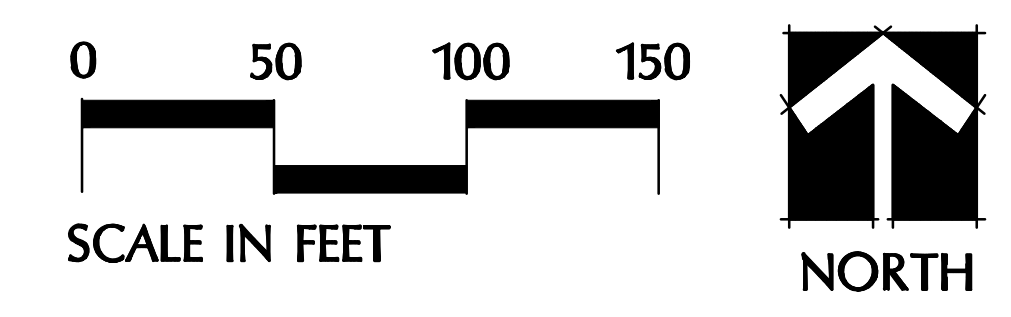


VICINITY MAP
NOT TO SCALE
RINGGENBERG PARK SUBDIVISION

MARKETED BY:

FRIEDRICH
IOWA Realty
-Welcome Home!

232-6175



- ABUNDANT GREEN SPACE
- CITY OF AMES UTILITIES
- AMES SCHOOLS
- WALKING TRAILS
- NATURAL AREAS
- CONVENIENTLY LOCATED NEAR IOWA STATE UNIVERSITY & ISU RESEARCH PARK



FOX Engineering Associates, Inc.
414 South 17th Street, Suite 107
Ames, Iowa 50010
Phone: 515 233-0000
FAX: 515 233-0103