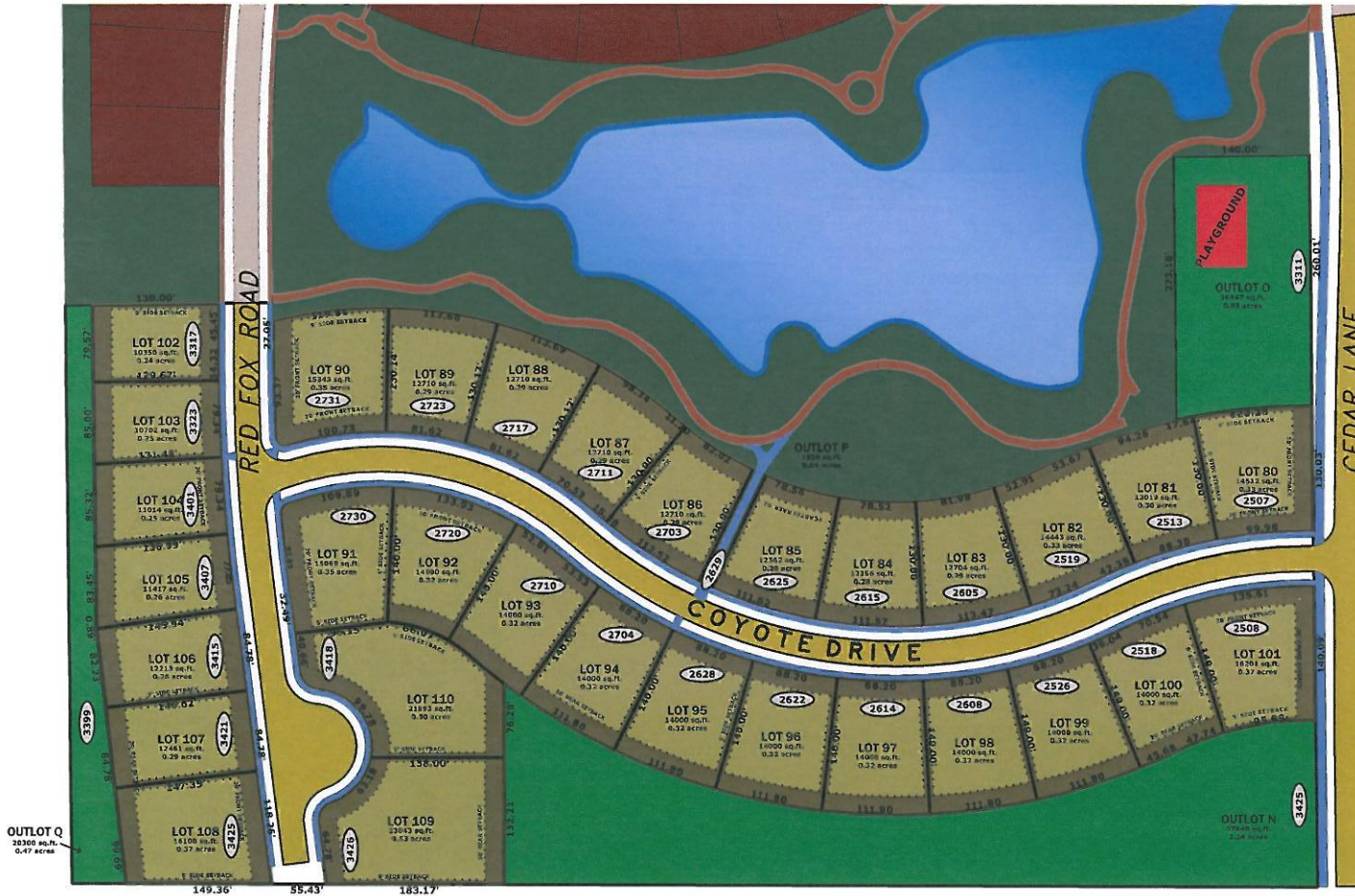


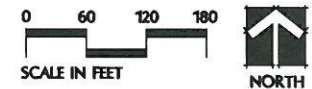
RINGGENBERG PARK SUBDIVISION



VICINITY MAP
NOT TO SCALE

MARKETED BY:
FRIEDRICH
LOWARealty
-Welcome Home!

232-6175



- WALK-OUT & DAYLIGHT HOMESITES AVAILABLE
- CITY OF AMES UTILITIES
- AMES SCHOOLS
- WALKING TRAILS
- ABUNDANT GREEN SPACE
- NATURAL AREAS
- CONVENIENTLY LOCATED NEAR IOWA STATE UNIVERSITY & ISU RESEARCH PARK
- EASY DRIVE TO ANKENY & DES MOINES

PLEASE CONTACT ONE OF OUR REALTORS TO FIND THE HOMESITE FOR YOUR DREAM HOME!



FOX Engineering Associates, Inc.
 414 South 17th Street, Suite 107
 Ames, Iowa 50010
 Phone: 515 233-0000
 FAX: 515 233-0103